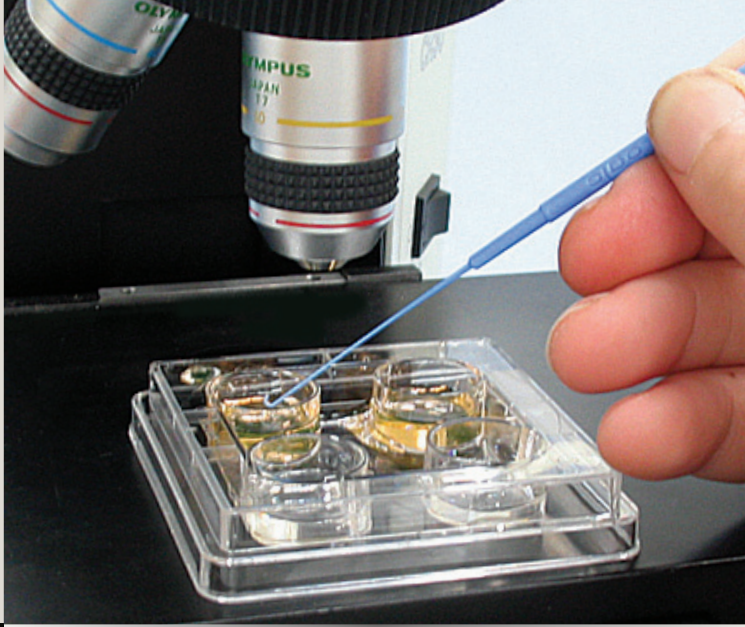


Transportation of Vitrified Embryos

What You Need to Know



Transportation of Vitrified Embryos Between Units

Patients who have undertaken IVF treatment and have generated frozen embryos sometimes choose to move them elsewhere for continued treatment. This is common practice and is done by placing the embryos into a “dry shipper” – a specialised cryogenic vessel that keeps embryos in a “deep freeze” while being transported between clinics. When the shipper reaches the new clinic, the embryos are placed into larger tanks for ongoing storage.

What is vitrification?

Vitrification is a newer, faster method of freezing that uses smaller volumes of media than traditional processes.

City Fertility Centre laboratories were among the first in Australia to implement this method of freezing, which means the staff have extensive experience in this procedure.

City Fertility Centre's results show that more than 90% of embryos survive vitrification and at least 40% will go on to achieve a pregnancy.

Quality control assured

Recently, some clinics and the media have raised concerns about transporting embryos frozen by the vitrification method. This fact sheet is intended to address and alleviate these concerns.

First, there are concerns regarding the stability of the tanks in which these embryos are shipped.

All City Fertility Centre tanks are monitored regularly, and confirmed for integrity and temperature maintenance before and after each and every use. These tanks are able to hold temperature for a number of days and City Fertility Centre has successfully shipped embryos around the world using these containers, with evidence that the contents were never compromised.

Research reflects positive results

A published scientific study (Reed, reporting in The Clinical Embryologist, Volume 10, Issue 4) showed that vitrified embryos held in a storage tank for three days had no difference in survival when thawed. This study also showed that the duration of storage had no effect on thawing outcome, survival and continued embryonic development.

City Fertility Centre fully supports and facilitates the transportation of vitrified embryos.

We are happy to assist you in moving your embryos between clinics. If you have any questions, please contact your nearest clinic to speak to one of our experienced scientists.

Where to Now?

Transporting embryos to a Clinic:

- Fill out the necessary paperwork
- Receiving clinic will organise the transport of the embryos

I want more information

- Contact your nearest clinic or
- Book a 15 minute nurse chat

Contact Us

Call 1300 354 354

Email contactus@cityfertility.com.au

Visit cityfertility.com.au

MFS09 0815 0915



CITY FERTILITY CENTRE
your partners in life